



# A Snapshot of a Senior Center in RI

Study Commission on Aging 2023



# Agenda

- The role of the Senior Center
- Interplay with Governmental Supports
- RI's Senior Service Delivery System
- Interplay with Partnering Agencies and Business
- Our place in the Community-At-Large
- The Challenges

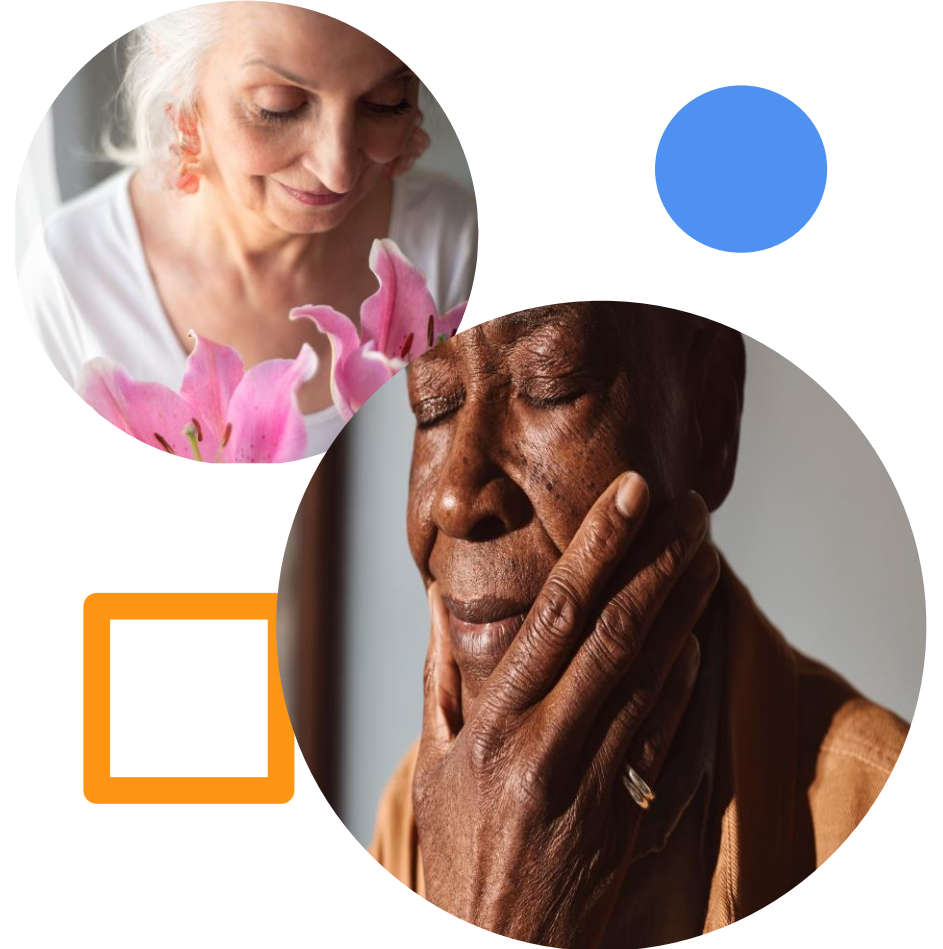


# The Role of the Senior Center

In RI

# The Role of the Senior Center in Rhode Island

- Combatting Social Isolation
- Promoting Mental Well-Being
- Promoting Physical Health
- Access to Health Information
- Lifelong Learning
- Support Services
- Volunteer and Civic Engagement
- Digital Inclusion
- Assistance for Caregivers
- Cultural Enrichment
- Representation and Advocacy





Interplay with  
Governmental  
Supports

# Top 10 Governmental Connections





# RI's Senior Service Delivery System

# RI's Aging Community Delivery System


- Comprehensive Services
- Health and Wellness Programs
- Preventive Healthcare
- Community Engagement
- Lifelong Learning
- Meal Programs
- Resource Hub
- Mobility Support
- Counseling and Support Groups
- Technology Access and Assistance
- Volunteer Opportunities






# Interplay with Partnering Agencies and Business

(how to become a “hub” 101)



When we refer to a "hub for resources," we are describing a central location or organization that serves as a focal point for gathering, organizing, and providing access to a variety of resources. This concept is particularly relevant in the context of community services, support networks, or information dissemination.

- Centralized Access
  - Diverse Range of Resources
  - Information Repository
  - Coordination of Services
  - Community Networking
  - Advocacy and Support
  - Holistic Approach
  - Accessibility
- 



Our Place in the  
Community-At-  
Large

# Serving the entire population through the lens of older adults.



**The Voice**



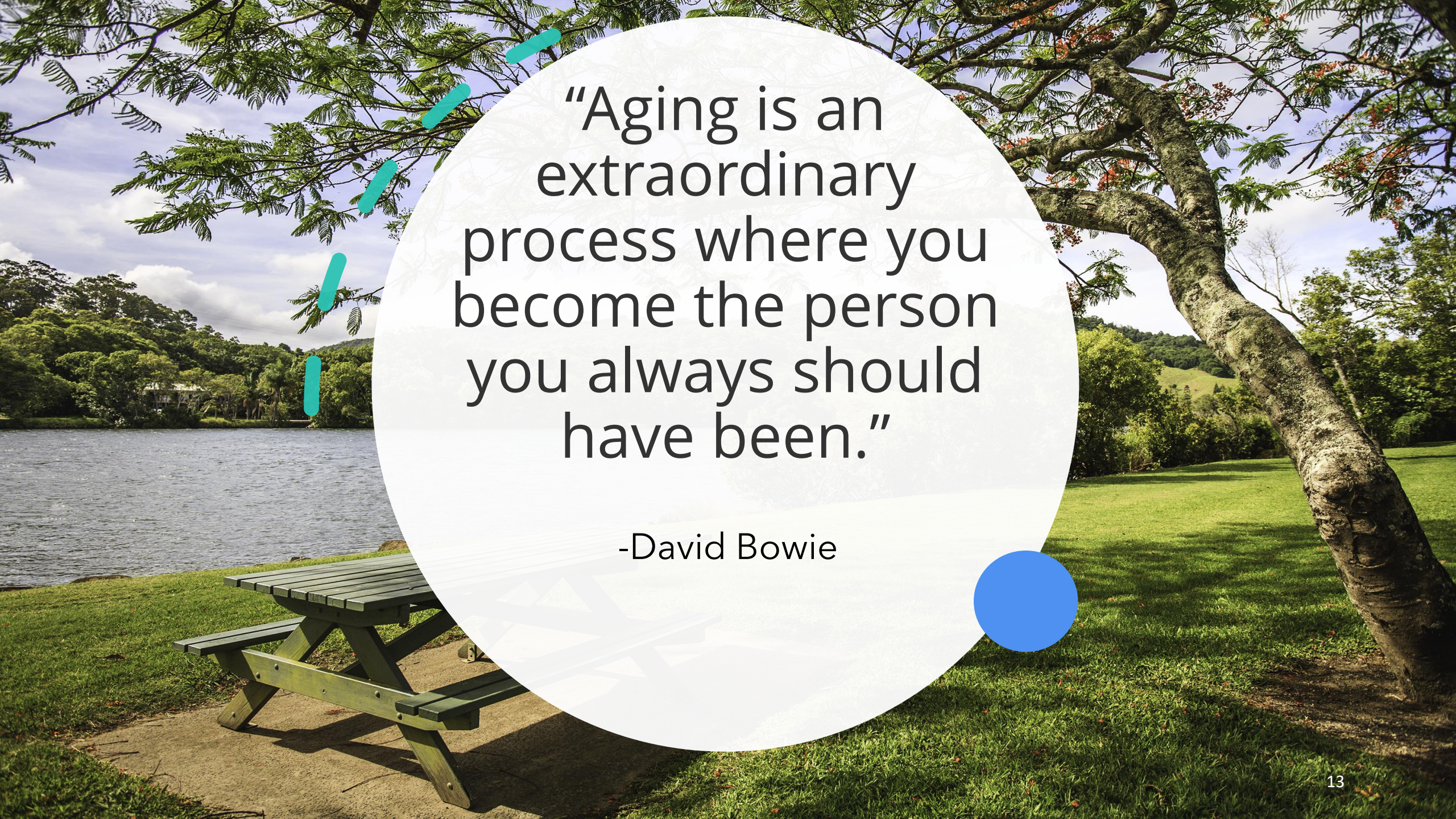
**Problem Solver**



**First Response**




**Culturally Reflective**



“Aging is an extraordinary process where you become the person you always should have been.”

-David Bowie

An aerial photograph of a city at sunset, with a large white circle overlaid in the center. The circle contains a quote in black text. The city below shows a mix of old and new buildings, with a prominent church spire on the left and a large construction site on the right. The sky is a mix of orange, yellow, and blue.

“Old people deserve a medal,  
a medal of existence which  
crowns their long-term victory  
against the cruelty of time  
and the dangers of this  
chaotic universe!”

– Mehmet Murat ildan



# The Challenges

# Challenges

- **Bureaucratic Hurdles**
- **Funding and Resource Constraints**
- **Differing Priorities and Agendas**
- **Policy and Legislative Complexity**
- **Communication and Coordination Issues**
- **Data Sharing and Privacy Concerns**
- **Geographical and Demographic Variances**
- **Changing Political Landscape**
- **Cultural Competency and Diversity**
- **Capacity and Expertise**



A community that prioritizes and actively supports its senior population tends to be more inclusive, resilient, compassionate and healthy.





Thank you

Carmela Geer  
Executive Director  
Edward King House Senior Center  
Newport, RI