

The background of the slide is a close-up, slightly blurred view of the stars and stripes of the United States flag. The top half is dominated by blue with white stars, while the bottom right corner shows the red and white stripes.

# **Redistricting – 2022 Plans to send to Legislature**

**By Kimball Brace  
Election Data Services, Inc.  
January 12, 2022**

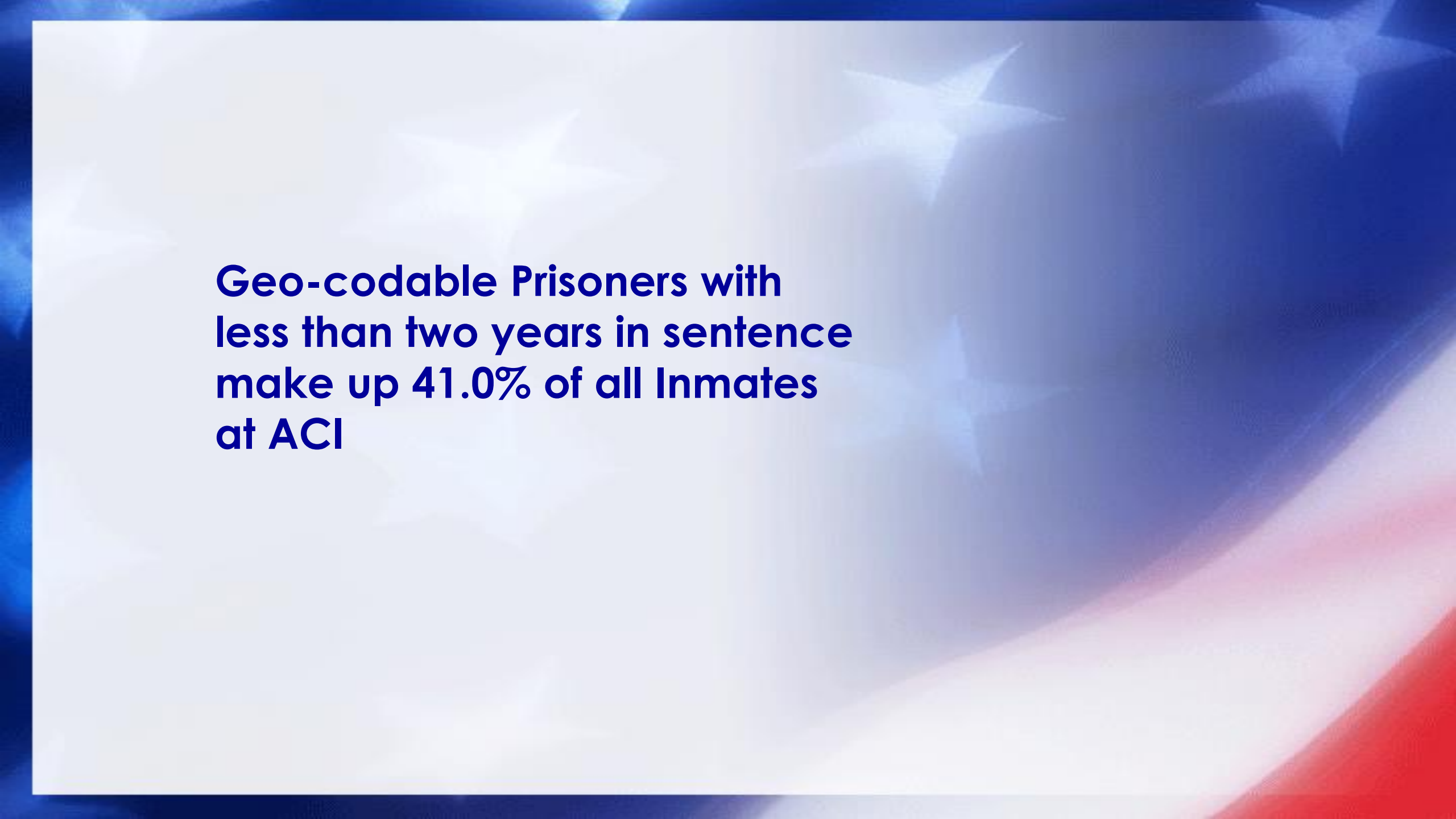
# Today's Discussion

## Adjustments to Plans

1. Adjustment of Prisoner Populations
2. Impact of eliminating Pockets
3. Overall Plan Release
  - [www.riredistricting.org](http://www.riredistricting.org)
4. Voting on final plans

## Years before Good Time Release

	All Inmates		Geocoded Inmates	
Not Yet Sentenced	494	18.87%	398	20.65%
Under 1	631	24.10%	489	25.38%
1 to 2	229	8.75%	187	9.70%
2 to 3	<b>1354</b>	<b>51.7%</b>	<b>1074</b>	<b>55.7%</b>
3 to 5	168	6.42%	137	7.11%
5 to 10	197	7.52%	164	8.51%
10 or Over	243	9.28%	192	9.96%
Never	251	9.59%	182	9.44%
Undetermined	393	15.01%	178	9.24%
TOTAL	12	0.46%		
	<b>2618</b>		<b>1927</b>	

The background of the slide is a close-up, slightly blurred image of the American flag, showing the stars and stripes in shades of blue, white, and red.

**Geo-codable Prisoners with  
less than two years in sentence  
make up 41.0% of all Inmates  
at ACI**

## **Consideration on impact of shift**

- **For Legislative redistricting**
  - **Have a 10% window (+5%/-5%)**
  - **State House: 13,900 – 15,363**
  - **State Senate: 27,434 – 30,322**

# State House Plan D

DISTRICT	Adjusted Population Tabulation				Original Population Tabulation			
	All Persons	Target	Dev.	Difference	Prior Persons	Target	Dev.	Difference
1	14,793	14,632	1.10%	161	14,791	14,632	1.09%	159
2	14,166	14,632	-3.18%	-466	14,159	14,632	-3.23%	-473
3	15,151	14,632	3.55%	519	15,104	14,632	3.23%	472
4	14,245	14,632	-2.64%	-387	14,231	14,632	-2.74%	-401
5	15,338	14,632	4.83%	706	15,309	14,632	4.63%	677
6	15,061	14,632	2.93%	429	15,038	14,632	2.77%	406
7	15,347	14,632	4.89%	715	15,315	14,632	4.67%	683
8	15,046	14,632	2.83%	414	15,014	14,632	2.61%	382
9	15,304	14,632	4.59%	672	15,253	14,632	4.24%	621
10	15,295	14,632	4.53%	663	15,256	14,632	4.26%	624
11	15,123	14,632	3.36%	491	15,091	14,632	3.14%	459
12	15,120	14,632	3.34%	488	15,079	14,632	3.05%	447
13	15,277	14,632	4.41%	645	15,252	14,632	4.24%	620
14	14,746	14,632	0.78%	114	14,720	14,632	0.60%	88
15	15,069	14,632	2.99%	437	15,346	14,632	4.88%	714
16	14,290	14,632	-2.34%	-342	14,274	14,632	-2.45%	-358
17	13,926	14,632	-4.83%	-706	14,649	14,632	0.12%	17
18	14,191	14,632	-3.01%	-441	14,168	14,632	-3.17%	-464
19	15,014	14,632	2.61%	382	15,003	14,632	2.54%	371
20	15,276	14,632	4.40%	644	15,323	14,632	4.72%	691
21	14,088	14,632	-3.72%	-544	14,077	14,632	-3.79%	-555
22	14,239	14,632	-2.69%	-393	14,233	14,632	-2.73%	-399
23	13,999	14,632	-4.33%	-633	13,988	14,632	-4.40%	-644
24	15,340	14,632	4.84%	708	15,339	14,632	4.83%	707
25	14,653	14,632	0.14%	21	14,626	14,632	-0.04%	-6
26	14,247	14,632	-2.63%	-385	14,227	14,632	-2.77%	-405
27	14,867	14,632	1.61%	235	14,862	14,632	1.57%	230
28	13,979	14,632	-4.46%	-653	13,974	14,632	-4.50%	-658
29	13,962	14,632	-4.58%	-670	13,957	14,632	-4.61%	-675
30	14,464	14,632	-1.15%	-168	14,459	14,632	-1.18%	-173
31	14,096	14,632	-3.66%	-536	14,093	14,632	-3.68%	-539
32	14,154	14,632	-3.27%	-478	14,151	14,632	-3.29%	-481
33	14,066	14,632	-3.87%	-566	14,064	14,632	-3.88%	-568
34	14,113	14,632	-3.55%	-519	14,110	14,632	-3.57%	-522
35	15,036	14,632	2.76%	404	15,034	14,632	2.75%	402
36	14,354	14,632	-1.90%	-278	14,351	14,632	-1.92%	-281
37	14,643	14,632	0.08%	11	14,638	14,632	0.04%	6
38	13,999	14,632	-4.33%	-633	13,988	14,632	-4.40%	-644
39	13,974	14,632	-4.50%	-658	13,970	14,632	-4.52%	-662
40	14,037	14,632	-4.07%	-595	14,033	14,632	-4.09%	-599
41	14,456	14,632	-1.20%	-176	14,453	14,632	-1.22%	-179
42	14,374	14,632	-1.76%	-258	14,366	14,632	-1.82%	-266
43	14,403	14,632	-1.57%	-229	14,396	14,632	-1.61%	-236
44	15,283	14,632	4.45%	651	15,277	14,632	4.41%	645
45	15,275	14,632	4.39%	643	15,264	14,632	4.32%	632

46	15,354	14,632	4.93%	722	15,344	14,632	4.87%	712
47	14,198	14,632	-2.97%	-434	14,192	14,632	-3.01%	-440
48	13,930	14,632	-4.80%	-702	13,928	14,632	-4.81%	-704
49	15,227	14,632	4.07%	595	15,188	14,632	3.80%	556
50	15,224	14,632	4.05%	592	15,194	14,632	3.84%	562
51	15,224	14,632	4.05%	592	15,197	14,632	3.86%	565
52	15,111	14,632	3.27%	479	15,109	14,632	3.26%	477
53	14,005	14,632	-4.29%	-627	14,004	14,632	-4.29%	-628
54	15,289	14,632	4.49%	657	15,273	14,632	4.38%	641
55	15,127	14,632	3.38%	495	15,116	14,632	3.31%	484
56	15,312	14,632	4.65%	680	15,288	14,632	4.48%	656
57	13,986	14,632	-4.41%	-646	13,972	14,632	-4.51%	-660
58	14,407	14,632	-1.54%	-225	14,366	14,632	-1.82%	-266
59	15,303	14,632	4.59%	671	15,282	14,632	4.44%	650
60	15,337	14,632	4.82%	705	15,303	14,632	4.59%	671
61	15,321	14,632	4.71%	689	15,307	14,632	4.61%	675
62	13,960	14,632	-4.59%	-672	13,942	14,632	-4.72%	-690
63	14,378	14,632	-1.74%	-254	14,370	14,632	-1.79%	-262
64	15,345	14,632	4.87%	713	15,333	14,632	4.79%	701
65	15,331	14,632	4.78%	699	15,320	14,632	4.70%	688
66	14,045	14,632	-4.01%	-587	14,042	14,632	-4.03%	-590
67	14,332	14,632	-2.05%	-300	14,328	14,632	-2.08%	-304
68	13,930	14,632	-4.80%	-702	13,922	14,632	-4.85%	-710
69	14,136	14,632	-3.39%	-496	14,132	14,632	-3.42%	-500
70	14,520	14,632	-0.77%	-112	14,513	14,632	-0.81%	-119
71	14,035	14,632	-4.08%	-597	14,025	14,632	-4.15%	-607
72	13,927	14,632	-4.82%	-705	13,923	14,632	-4.85%	-709
73	14,425	14,632	-1.41%	-207	14,395	14,632	-1.62%	-237
74	14,280	14,632	-2.41%	-352	14,279	14,632	-2.41%	-353
75	14,270	14,632	-2.47%	-362	14,256	14,632	-2.57%	-376
STATE TOT	1,097,148							
Total Dev			9.8%	1,428			9.7%	1,424
Highest			4.9%	722			4.9%	714
Lowest			-4.8%	(706)			-4.9%	(710)

# State Senate Plan D

DISTRICT	Adjusted Population Tabulation				Original Population Tabulation			
	All Persons	Target	Dev.	Difference	Prior Persons	Target	Dev.	Difference
1	30,307	28,878	4.95%	1,429	30,238	28,878	4.71%	1,360
2	30,020	28,878	3.95%	1,142	29,951	28,878	3.72%	1,073
3	27,584	28,878	-4.48%	-1,294	27,579	28,878	-4.50%	-1,299
4	30,046	28,878	4.04%	1,168	30,013	28,878	3.93%	1,135
5	30,113	28,878	4.28%	1,235	30,065	28,878	4.11%	1,187
6	30,282	28,878	4.86%	1,404	30,193	28,878	4.55%	1,315
7	30,306	28,878	4.94%	1,428	30,234	28,878	4.70%	1,356
8	28,115	28,878	-2.64%	-763	28,071	28,878	-2.79%	-807
9	29,245	28,878	1.27%	367	29,205	28,878	1.13%	327
10	28,349	28,878	-1.83%	-529	28,332	28,878	-1.89%	-546
11	28,283	28,878	-2.06%	-595	28,272	28,878	-2.10%	-606
12	29,546	28,878	2.31%	668	29,535	28,878	2.28%	657
13	28,325	28,878	-1.91%	-553	28,284	28,878	-2.06%	-594
14	27,524	28,878	-4.69%	-1,354	27,509	28,878	-4.74%	-1,369
15	30,304	28,878	4.94%	1,426	30,262	28,878	4.79%	1,384
16	29,110	28,878	0.80%	232	29,042	28,878	0.57%	164
17	27,450	28,878	-4.94%	-1,428	27,439	28,878	-4.98%	-1,439
18	28,409	28,878	-1.62%	-469	28,381	28,878	-1.72%	-497
19	29,395	28,878	1.79%	517	29,386	28,878	1.76%	508
20	27,839	28,878	-3.60%	-1,039	27,804	28,878	-3.72%	-1,074
21	27,447	28,878	-4.96%	-1,431	27,443	28,878	-4.97%	-1,435
22	29,905	28,878	3.56%	1,027	29,891	28,878	3.51%	1,013
23	29,437	28,878	1.94%	559	29,426	28,878	1.90%	548
24	27,635	28,878	-4.30%	-1,243	27,570	28,878	-4.53%	-1,308
25	27,475	28,878	-4.86%	-1,403	27,460	28,878	-4.91%	-1,418
26	28,226	28,878	-2.26%	-652	28,205	28,878	-2.33%	-673
27	30,191	28,878	4.55%	1,313	31,190	28,878	8.01%	2,312
28	29,258	28,878	1.32%	380	29,207	28,878	1.14%	329
29	28,699	28,878	-0.62%	-179	28,680	28,878	-0.69%	-198
30	28,725	28,878	-0.53%	-153	28,712	28,878	-0.57%	-166
31	27,576	28,878	-4.51%	-1,302	27,616	28,878	-4.37%	-1,262
32	28,415	28,878	-1.60%	-463	28,407	28,878	-1.63%	-471
33	28,402	28,878	-1.65%	-476	28,382	28,878	-1.72%	-496
34	28,505	28,878	-1.29%	-373	28,498	28,878	-1.32%	-380
35	30,128	28,878	4.33%	1,250	30,118	28,878	4.29%	1,240
36	30,056	28,878	4.08%	1,178	30,051	28,878	4.06%	1,173
37	27,595	28,878	-4.44%	-1,283	27,592	28,878	-4.45%	-1,286
38	29,152	28,878	0.95%	274	29,136	28,878	0.89%	258
STATE TOT	1,097,379							
Total Dev			9.9%	2,860			13.0%	3,751
Highest			4.9%	1,429			8.0%	2,312
Lowest			-5.0%	(1,431)			-5.0%	(1,439)

# Overall Impact of Prisoner Adjustment

**Kept change within the  
10% margin allowed**

## Total Plan Deviations

State House		State Senate	
Unadjusted	Adjusted	Unadjusted	Adjusted
9.7%	9.8%	13.0%*	9.9%

\*Senate #27 in Cranston: +8%



# Plans Impact on Minorities

## State House D

	PVAPNHWh_A	PVAPNHBl_A	PVAPNHNA_A	PVAPNHAS_A	PVAPNHPI_A	PVAPNHOT_A	PVAPHisp	PVAPNonW
<b>Racial Percentage of Districts - Voting Age Population (Existing State House)</b>								
> 90%	16	0	0	0	0	0	0	0
80% - 89.9%	25	0	0	0	0	0	0	4
70% - 79.9%	8	0	0	0	0	0	0	4
65% - 69.9%	6	0	0	0	0	0	1	0
60% - 64.9%	4	0	0	0	0	0	3	3
55% - 59.9%	1	0	0	0	0	0	2	2
50% - 54.9%	2	0	0	0	0	0	1	0
45% - 49.9%	0	0	0	0	0	0	0	2
40% - 45.9%	2	0	0	0	0	0	2	1
35% - 39.9%	3	0	0	0	0	0	1	4
30% - 34.9%	0	0	0	0	0	0	1	6
20% - 29.9%	4	0	0	0	0	0	6	8
10% - 19.9%	4	12	0	4	0	0	13	25
<10%	0	63	75	71	75	75	45	16
<b>Racial Percentage of Districts - Voting Age Population (Existing State House)</b>								
> 90%	17	0	0	0	0	0	0	0
80% - 89.9%	24	0	0	0	0	0	0	3
70% - 79.9%	10	0	0	0	0	0	0	4
65% - 69.9%	3	0	0	0	0	0	0	2
60% - 64.9%	2	0	0	0	0	0	4	0
55% - 59.9%	4	0	0	0	0	0	2	3
50% - 54.9%	2	0	0	0	0	0	0	1
45% - 49.9%	1	0	0	0	0	0	1	2
40% - 45.9%	3	0	0	0	0	0	2	4
35% - 39.9%	0	0	0	0	0	0	1	2
30% - 34.9%	2	0	0	0	0	0	1	3
20% - 29.9%	4	0	0	0	0	0	8	10
10% - 19.9%	3	11	0	4	0	0	10	24
<10%	0	64	75	71	75	75	46	17

# Plans Impact on Minorities

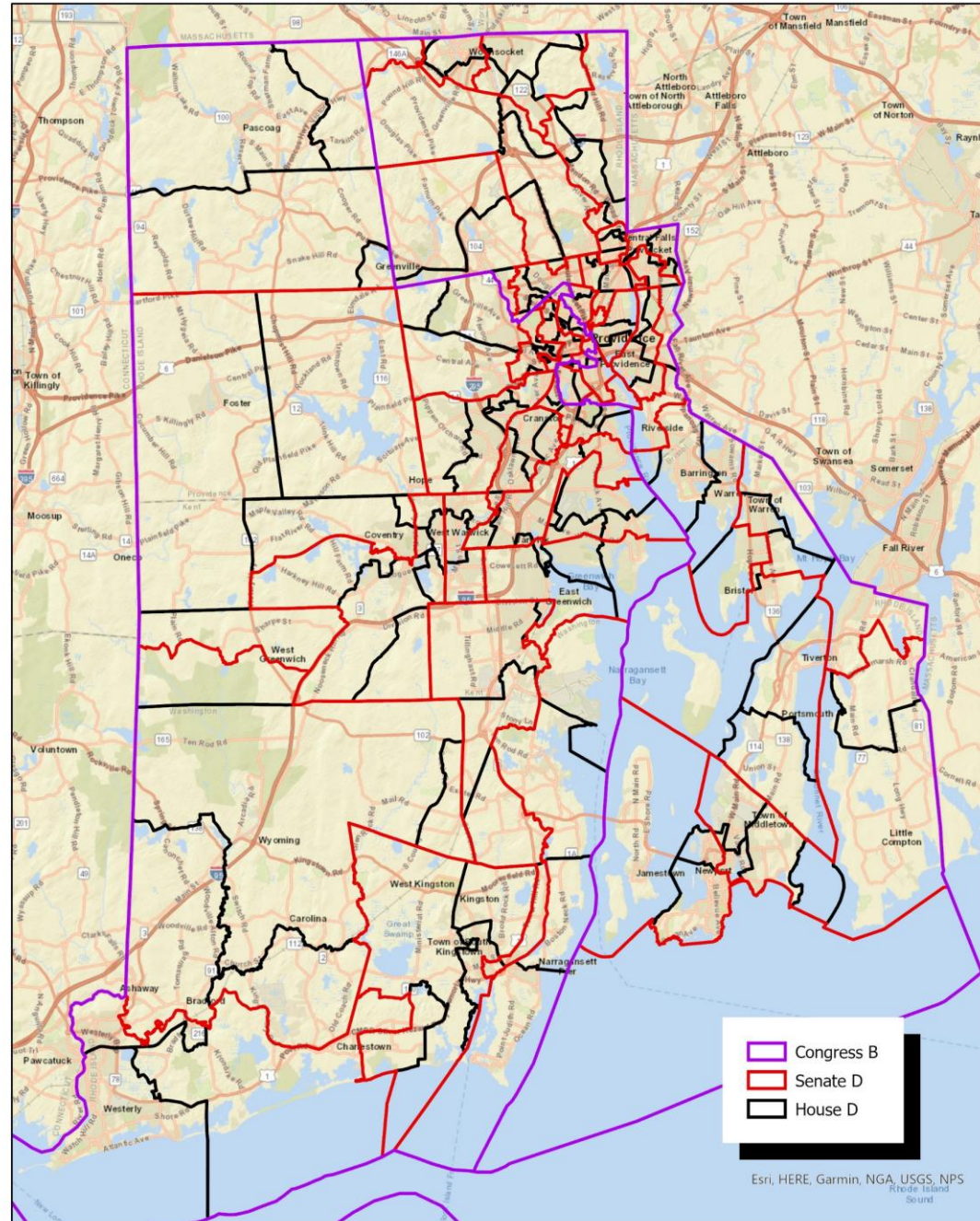
## State Senate D

	White (Non Hisp)	Black (Non Hisp)	Native (Non Hisp)	Asian (Non Hisp)	Pac. Isl. (Non Hisp)	Other (Non Hisp)	Hispanic
<b>Racial Percentage of Districts - Voting Age Population (Senate D)</b>							
> 90%	7	0	0	0	0	0	0
80% - 89.9%	14	0	0	0	0	0	0
70% - 79.9%	4	0	0	0	0	0	0
65% - 69.9%	4	0	0	0	0	0	0
60% - 64.9%	1	0	0	0	0	0	1
55% - 59.9%	1	0	0	0	0	0	0
50% - 54.9%	0	0	0	0	0	0	2
45% - 49.9%	0	0	0	0	0	0	1
40% - 45.9%	1	0	0	0	0	0	1
35% - 39.9%	2	0	0	0	0	0	1
30% - 34.9%	1	0	0	0	0	0	0
20% - 29.9%	2	0	0	0	0	0	2
10% - 19.9%	1	5	0	1	1	0	7
<10%	0	33	38	37	38	38	23
<b>Racial Percentage of Districts - Voting Age Population (Existing State Senate)</b>							
> 90%	6	0	0	0	0	0	0
80% - 89.9%	15	0	0	0	0	0	0
70% - 79.9%	4	0	0	0	0	0	0
65% - 69.9%	4	0	0	0	0	0	1
60% - 64.9%	0	0	0	0	0	0	0
55% - 59.9%	1	0	0	0	0	0	2
50% - 54.9%	1	0	0	0	0	0	0
45% - 49.9%	1	0	0	0	0	0	0
40% - 45.9%	2	0	0	0	0	0	1
35% - 39.9%	0	0	0	0	0	0	1
30% - 34.9%	0	0	0	0	0	0	1
20% - 29.9%	3	0	0	0	0	0	3
10% - 19.9%	1	5	0	1	1	0	6
<10%	0	33	38	37	38	38	23

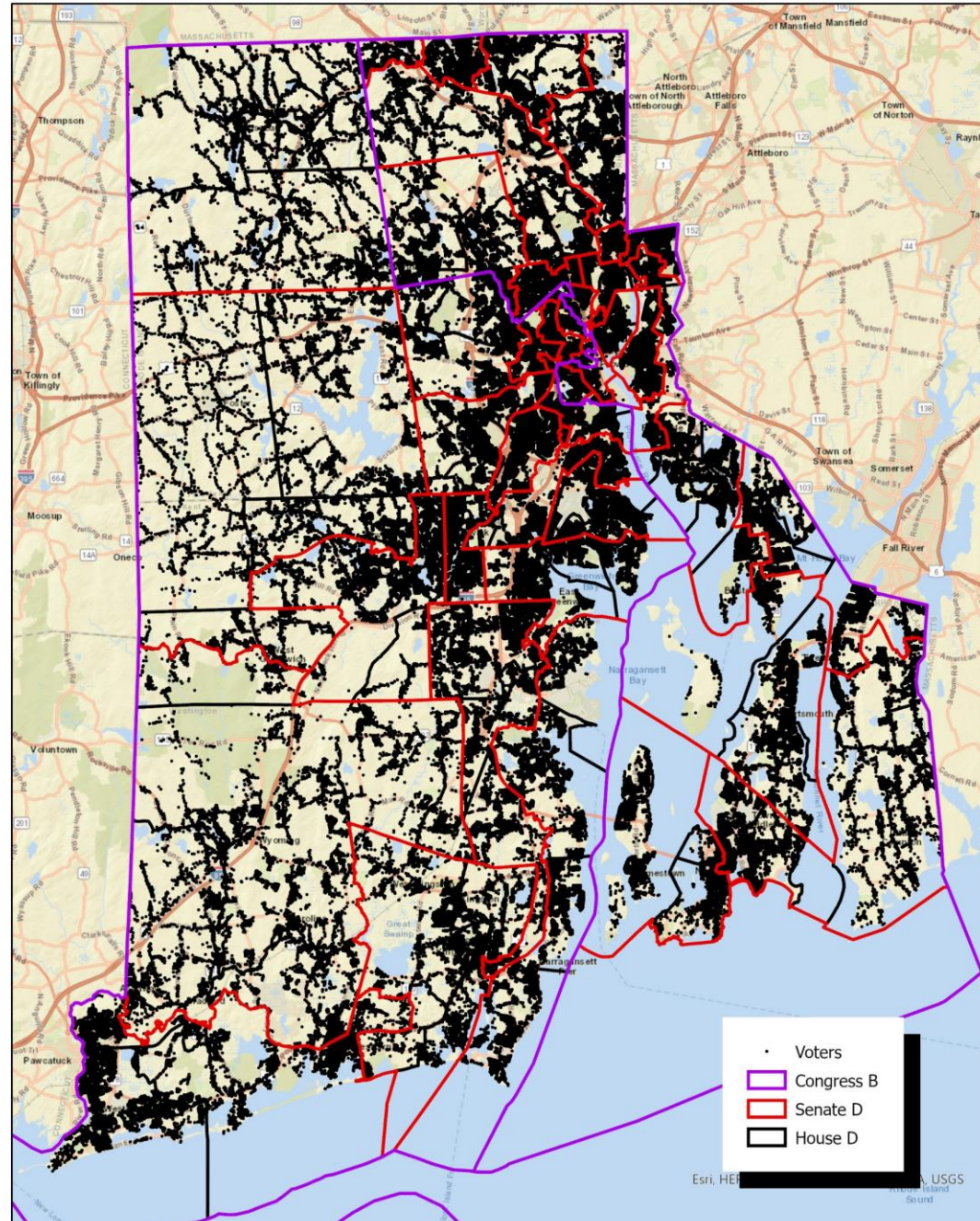
# Pocket Issues

- **Minimize number of registered voters when overlaying**
  - **Congressional**
  - **State Senate**
  - **State House**

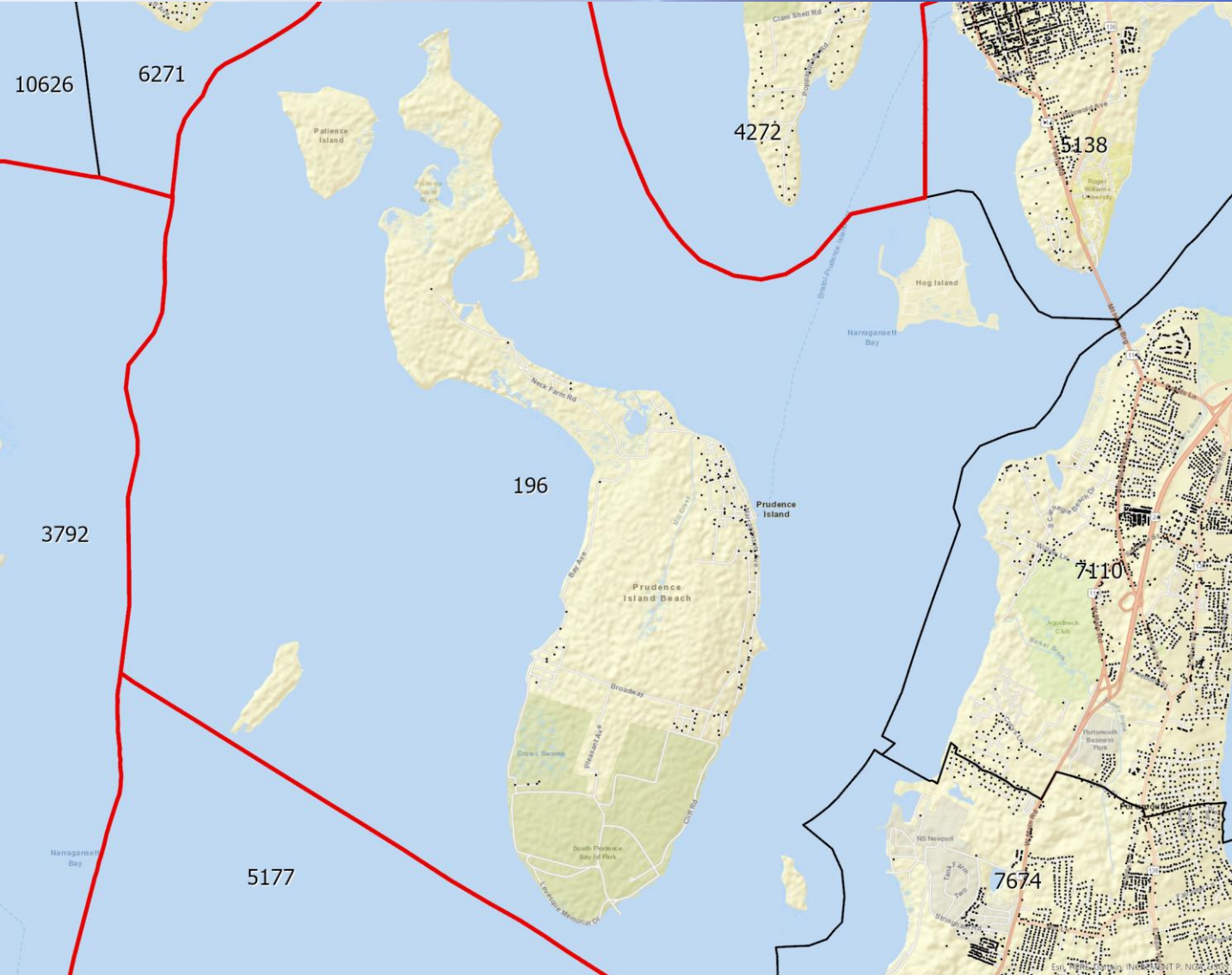
# Dealing with Pocket Precincts

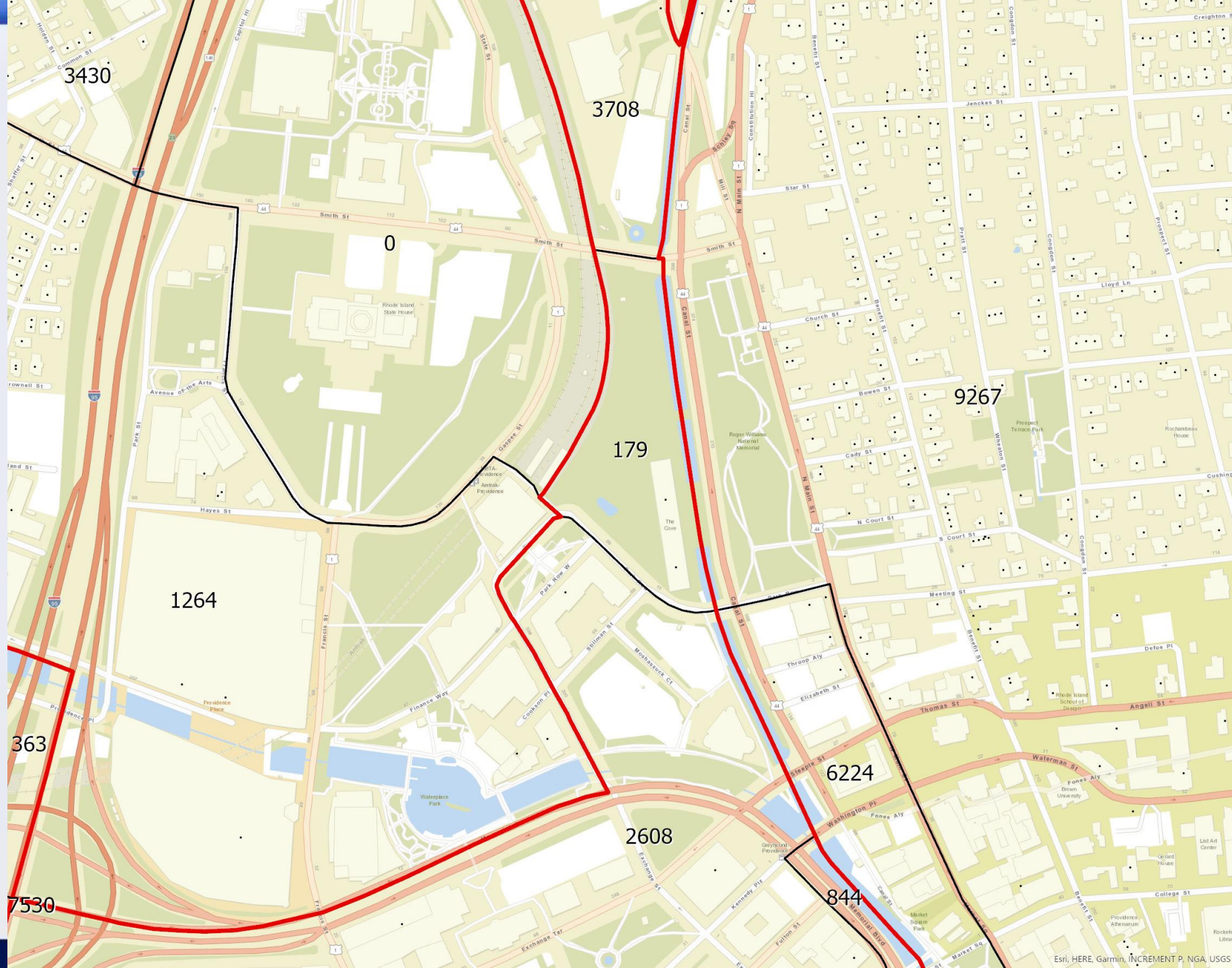


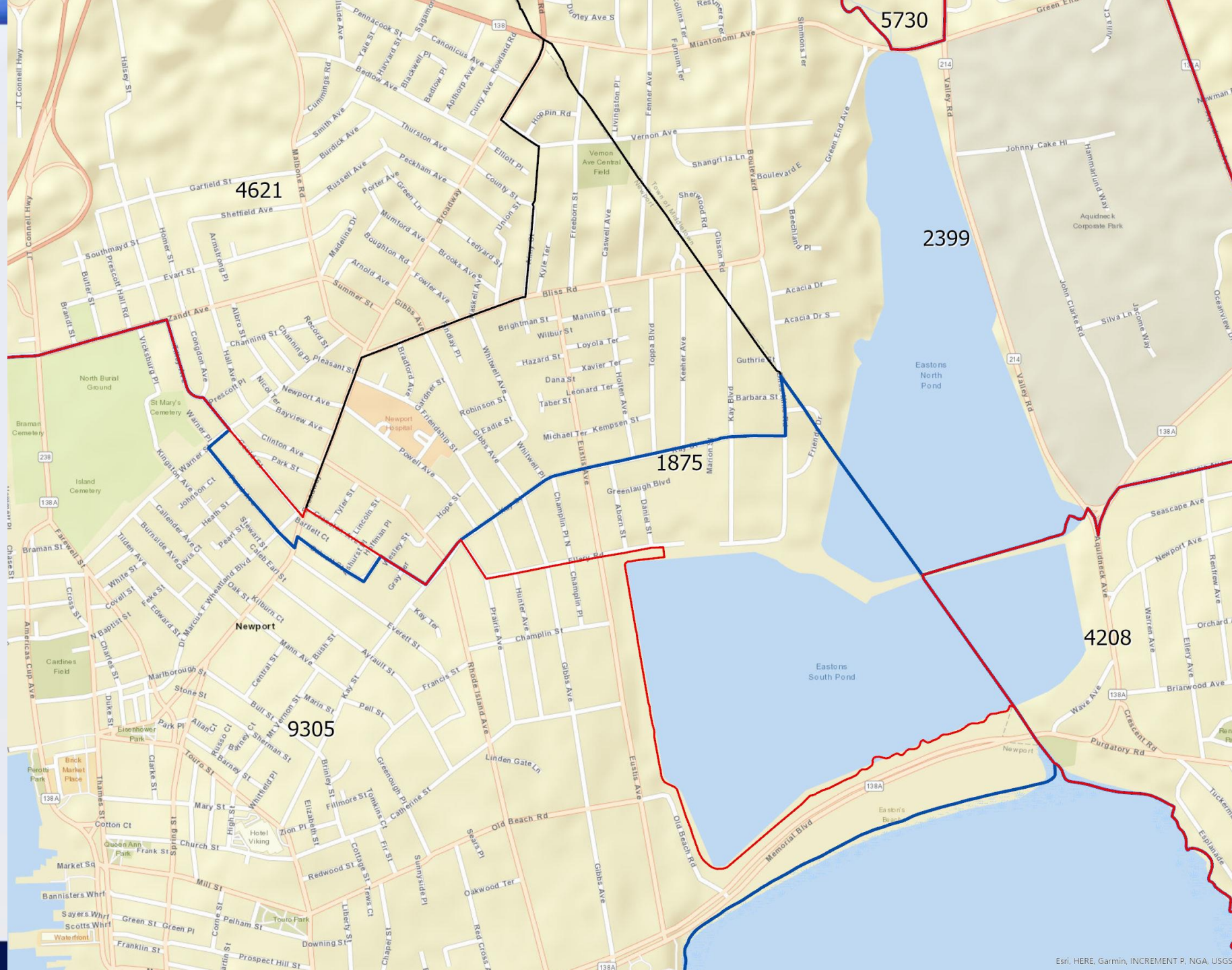
# Dealing with Pocket Precincts



# Unfixed Pocket







4621

5730

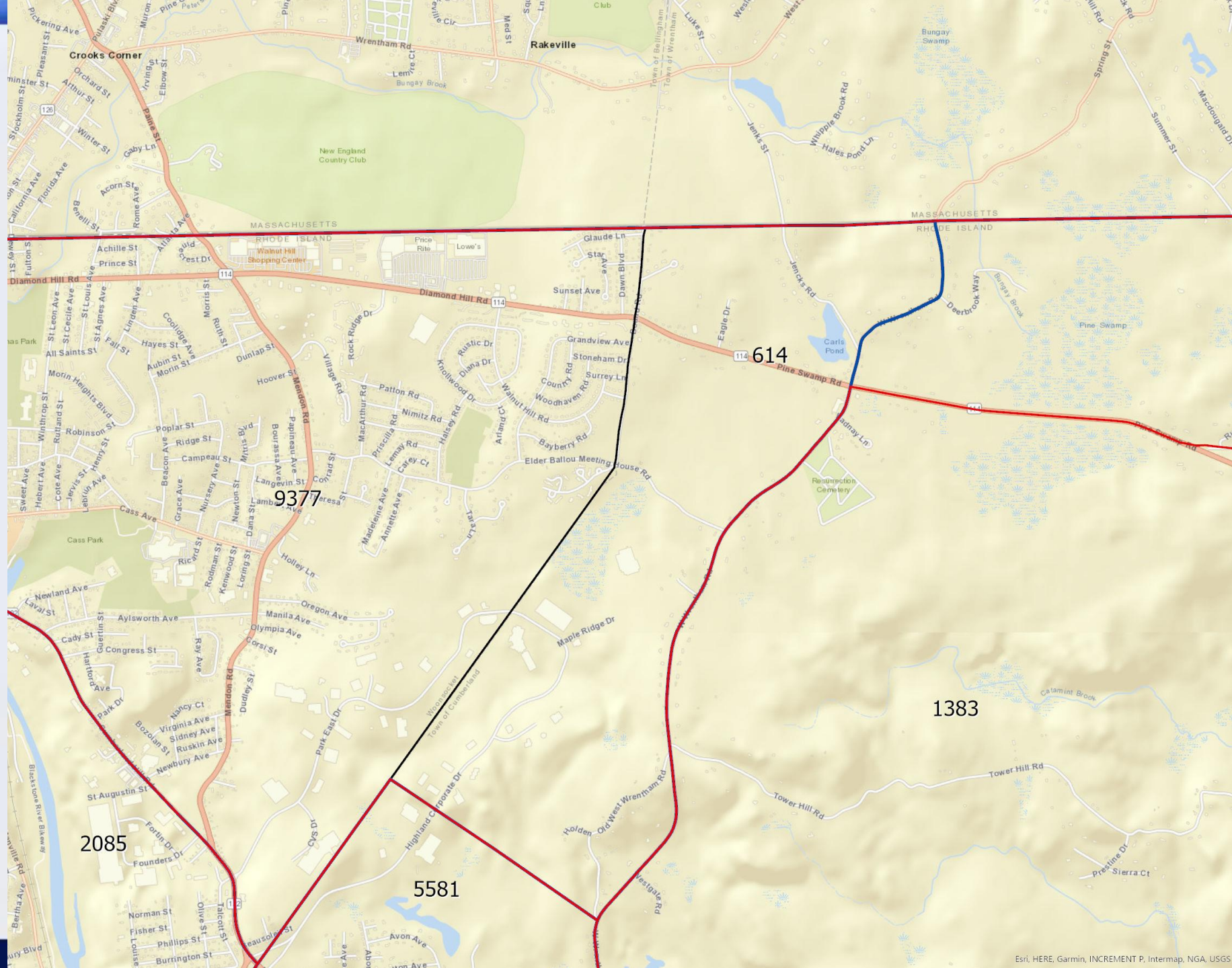
2399

1875

4208

9305





# Maps on Large Plots Here

[www.riredistricting.org](http://www.riredistricting.org)

Link there to go to My Districting  
system for each plan

Includes racial information

Comparison Tables – “A vs B”

- Districts vs Towns & Cities
- New Districts vs Old Districts



**Shape Files  
Available  
Also**

***Thank you***



**Kimball Brace  
President**

***Election Data Services, Inc.***

**6171 Emerywood Court**

**Manassas, VA 20112**

**(703-580-7267 or 202-789-2004)**

**[KBrace@electiondataservices.com](mailto:KBrace@electiondataservices.com) or**

**[KBrace@aol.com](mailto:KBrace@aol.com)**

**[www.electiondataservices.com](http://www.electiondataservices.com)**